

# Christ Church College Kanpur

## Environmental Protection Cell

### **Report on Campus Flora Identification and Documentation Drive**

**Date of Commencement:** 13 March 2026

**Organized by:** Environmental Protection Cell (EPC)

**Objective:** To identify, assess, and digitally document the floral diversity of the college campus.

---

### **1. Introduction**

The Environmental Protection Cell (EPC) recently initiated a comprehensive flora identification drive to audit the college's green cover. The project aims to categorize all vegetation, including trees and plants in high-traffic zones like the parking areas, to promote ecological awareness and campus sustainability.

### **2. Progress and Methodology**

As of the first week of the drive, the EPC student volunteers have successfully mapped approximately **46% of the total campus vegetation**. The drive focuses on systematic classification and physical numbering of each specimen.

- **Taxonomic Scope:** To date, **41 distinct Genus** of plants have been identified.
- **Physical Inventory:** A total of **86 individual plants/trees** have been tagged and numbered across three primary college blocks.
- **Volunteer Involvement:** Student volunteers are leading the field survey, ensuring each plant is correctly cataloged and assigned a unique identification number.

### **3. Digital Integration (QR Coding)**

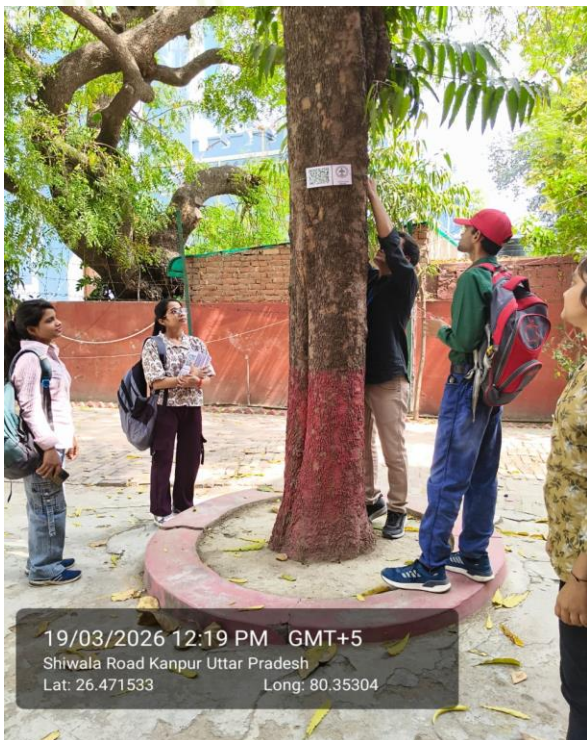
In a significant move toward a "Smart Campus," the EPC has developed a digital repository for the identified flora:

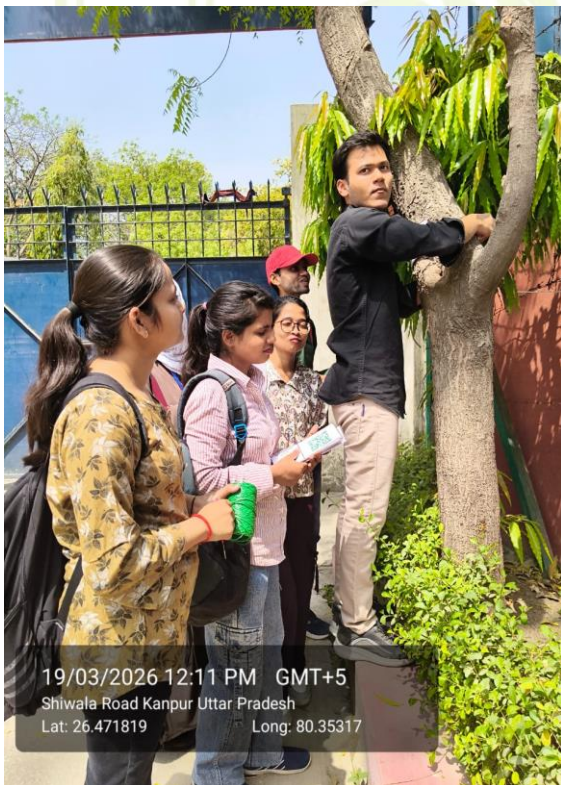
- **Identification Sheets:** Each genus has been assigned a QR code printed on durable vinyl sheets.
- **Information Display:** These sheets feature the **Botanical name** and **Regional name** of the plant.
- **Interactive Learning:** Upon scanning the QR code, users are directed to a comprehensive database detailing the plant's characteristics, ecological benefits, and medicinal uses (if applicable).

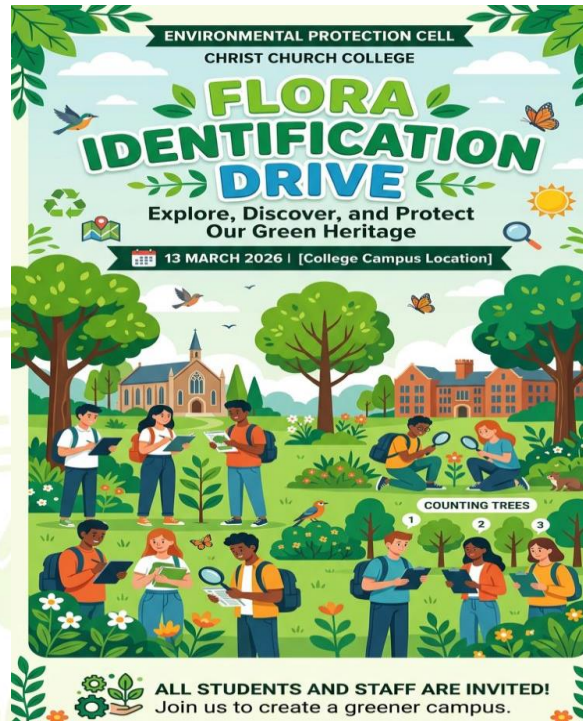
*The list of identified plants is as follows:*

1	<i>Aloe vera</i> (Ghritkumari)	17	<i>Bougainvillea glabra</i> (Paper Flower)
2	<i>Cassia fistula</i> (Amaltash)	18	<i>Casuarina equisetifolia</i> (Casuarina)
3	<i>Terminalia arjuna</i> (Arjun)	19	<i>Codiaeum variegatum</i> (Croton)
4	<i>Saraca asoca</i> (Ashok)	20	<i>Murraya koenigii</i> (Curry leaves)
5	<i>Withania somnifera</i> (Ashwagandha)	21	<i>Cycas revolute</i> (Sago Palm)
6	<i>Aegle marmelos</i> (Bilva Patra)	22	<i>Phoenix dactylifera</i> (Date Palm)
7	<i>Ficus benghalensis</i> (Banyan tree)	23	<i>Dracena cinnabari</i> (Dracena)
8	<i>Dryopteris filix-mas</i> (Dryopteris Male)	24	<i>Psidium guajava</i> (Guava)
9	<i>Delonix regia</i> (Gul Mohr Tree)	25	<i>Hemalia patens</i> (Fire Bush )
10	<i>Hibiscus rosa-sinensis</i> (Gudhal )	26	<i>Hydrilla</i> (Waterthymes )
11	<i>Eichhornia crassipes</i> (Water Hyacinth )	27	<i>Syzygium cumini</i> (Jamun Tree )
12	<i>Bauhinia variegata</i> (Kachnar Tree)	28	<i>Andrographis paniculata</i> (Kalmegh)
13	<i>Nerium oleander</i> (Kaner Tree)	29	<i>Carissa carandas</i> (Karonda Plant)
14	<i>Combretum indicum</i> (Malti Plant)	30	<i>Mangifera indica</i> (Mango Tree)
15	<i>Platycladus orientalis</i> (Morpankhi Plant)	31	<i>Murraya paniculata</i> (Manokamini Plant)
16	<i>Azadirachta indica</i> (Neem Tree)	32	<i>Pamelo citrus-maxima</i> (Chakotara Plant)
33	<i>Ficus religiosa</i> (Peepal Tree)	38	<i>Rosa cinnamomia</i> (Rose Plant)
34	<i>Roystonea regia</i> (Royal Palm Tree)	39	<i>Astonia scholaris</i> (Saptarni Tree)
35	<i>Bombax ceiba</i> (Semal Tree)	40	<i>Rauwolfia serpentine</i> (Sarpagnadha Plant)
36	<i>Dalbergia sissoo</i> (Sheesham Tree)	41	<i>Crinum asiaticum</i> (Sudarshan Plant)
37	<i>Ocimum tenuiflorum</i> (Tulsi Plant)		

**IMAGES OF DRIVE**







#### 4. Future Roadmap

The first phase of the drive successfully covered three blocks of the college. The EPC plans to extend the identification and numbering process to the **remaining two blocks** in the coming weeks to complete the campus-wide floral census.

*H. Dixit*

**Dr. Himanshu Dixit**

Coordinator  
Environmental Protection Cell  
Christ Church College Kanpur

Date: 19.03.2026

Copy to:

1. IQAC Coordinator
2. NAAC Convenor
3. Nodal Officer, UP PRAMAN
4. Nodal Officer AISHE

